

DO NOT USE FOR NAVIGATION

PHILADELPHIA, PENNSYLVANIA

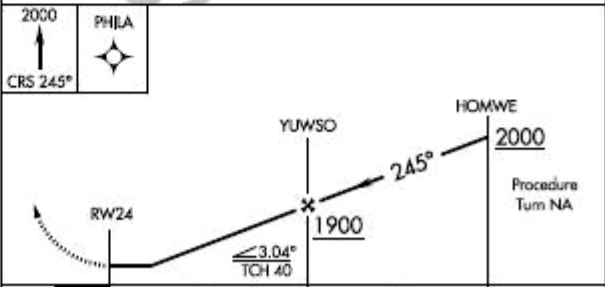
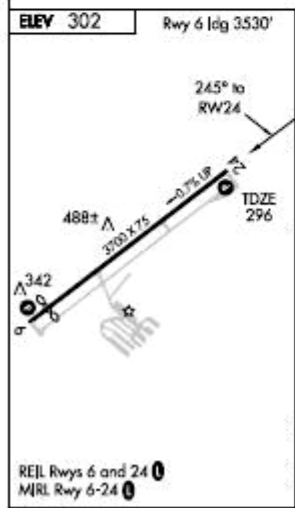
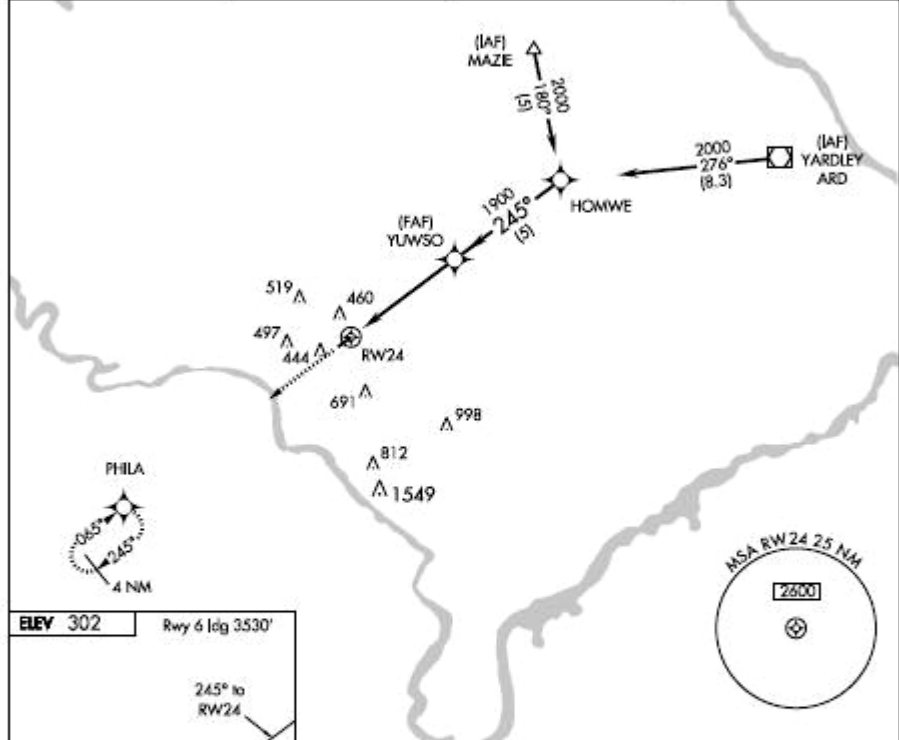
AI-5169 (FAA)

| | | |
|---------|----------|------|
| APP CRS | Rwy Idg | 3700 |
| 245° | TDZE | 296 |
| | Act Elev | 302 |

RNAV (GPS) RWY 24
PHILADELPHIA / WINGS FIELD (LOM)

| | |
|---|--|
| <p>GPS or RNP -0.3 required. DME/DME RNP -0.3 NA.</p> | <p>MISSED APPROACH: Climb to 2000 via 245° course to PHLA WP and hold.</p> |
|---|--|

| | | | |
|-------------------|--|--------------------|--------------------------|
| AWOS-3 118,925 | PHILADELPHIA APP CON 126,85 263,125 | CLNC DEL 118,55 | UNICOM 123.0 (CTAF) 0 |
|-------------------|--|--------------------|--------------------------|



| CATEGORY | A | B | C | D |
|----------|-------|-------------|---|----|
| LNAV MDA | 800-1 | 504 (500-1) | | NA |
| CIRCLING | 880-1 | 578 (600-1) | | NA |

PHILADELPHIA, PENNSYLVANIA
Orig-B 06047

40°08'N • 75°16'W

PHILADELPHIA / WINGS FIELD (LOM)
RNAV (GPS) RWY 24

NE-4, 27 SEP 2007 to 25 OCT 2007

NE-4, 27 SEP 2007 to 25 OCT 2007