

Wings Field (LOM) Noise Abatement Procedures:

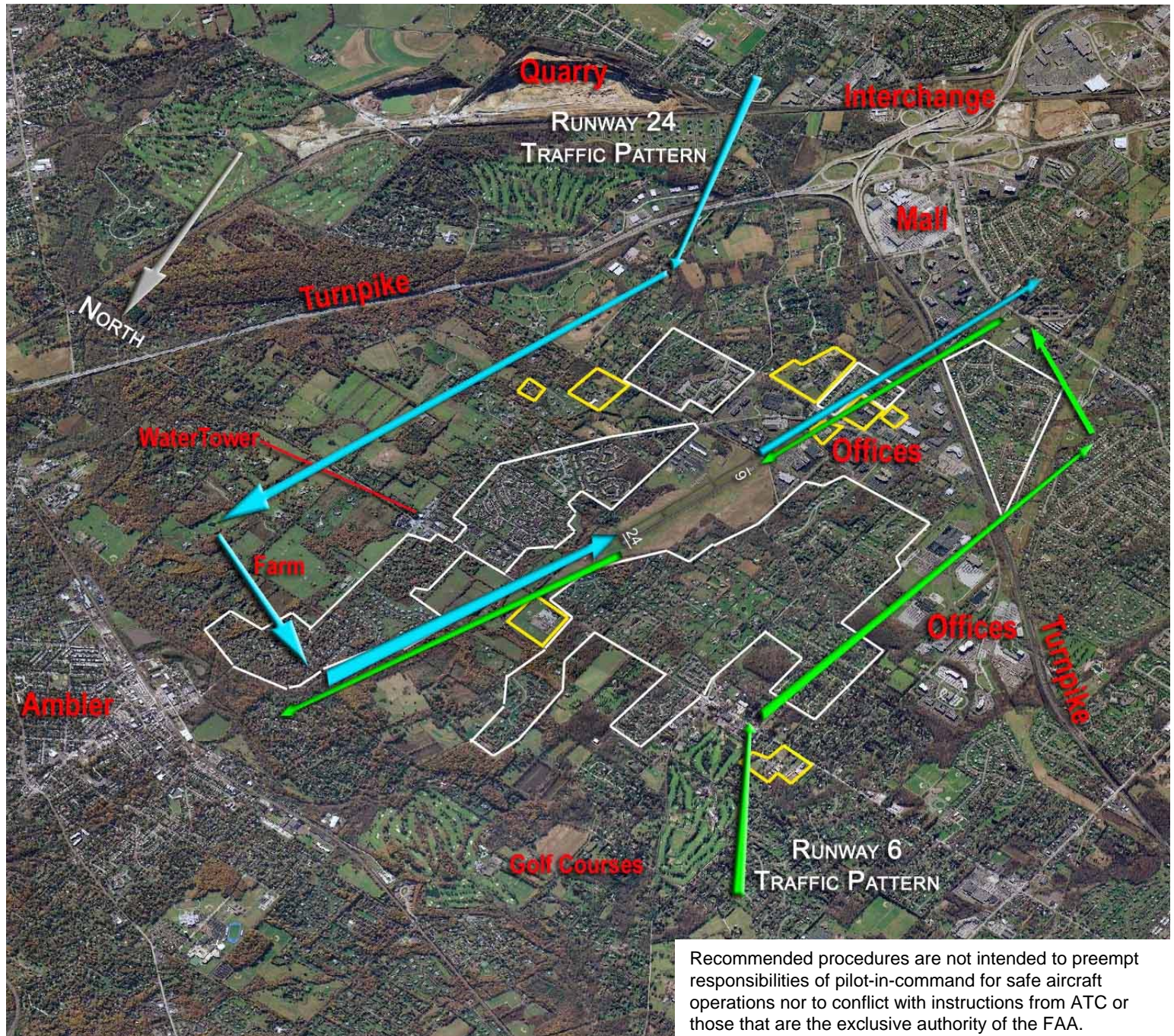
Small Business Jets

- Voluntary restraints from flying between 11PM and 6AM.
- Pattern altitude for jets and turboprops is 2,000' MSL (1,700' AGL).
- Runway 6 is preferred runway for jet departures.
- On takeoff and landing, use standardized NBAA noise abatement and FAA approved procedures. See brochure for details.
- On takeoff, fly runway heading to 2000' MSL before turning.
- Inbound flight path does not require more than 20 degree bank angle to follow noise abatement track.
- On landing, extend landing gear not more than 4 miles from runway end. At pilot's discretion, delay final landing flap configuration to enhance noise abatement. Maintain highest allowable altitude as long as practical.
- During landing, use minimum reverse thrust consistent with safety.
- As with all operations on short runways, pilots should carefully consider operating limitations of aircraft, balanced field length requirements, braking capabilities, etc.
- Avoid flying low over schools and residential areas.
- Wait times with engines running cannot exceed 5 minutes; APU/GPU times cannot exceed 10 minutes.

PHL Approach: 126.85

AWOS-3: 118.925

CTAF/UNICOM: 123.00



Recommended procedures are not intended to preempt responsibilities of pilot-in-command for safe aircraft operations nor to conflict with instructions from ATC or those that are the exclusive authority of the FAA.